



Transfield Services Mt Emerald Wind Farm

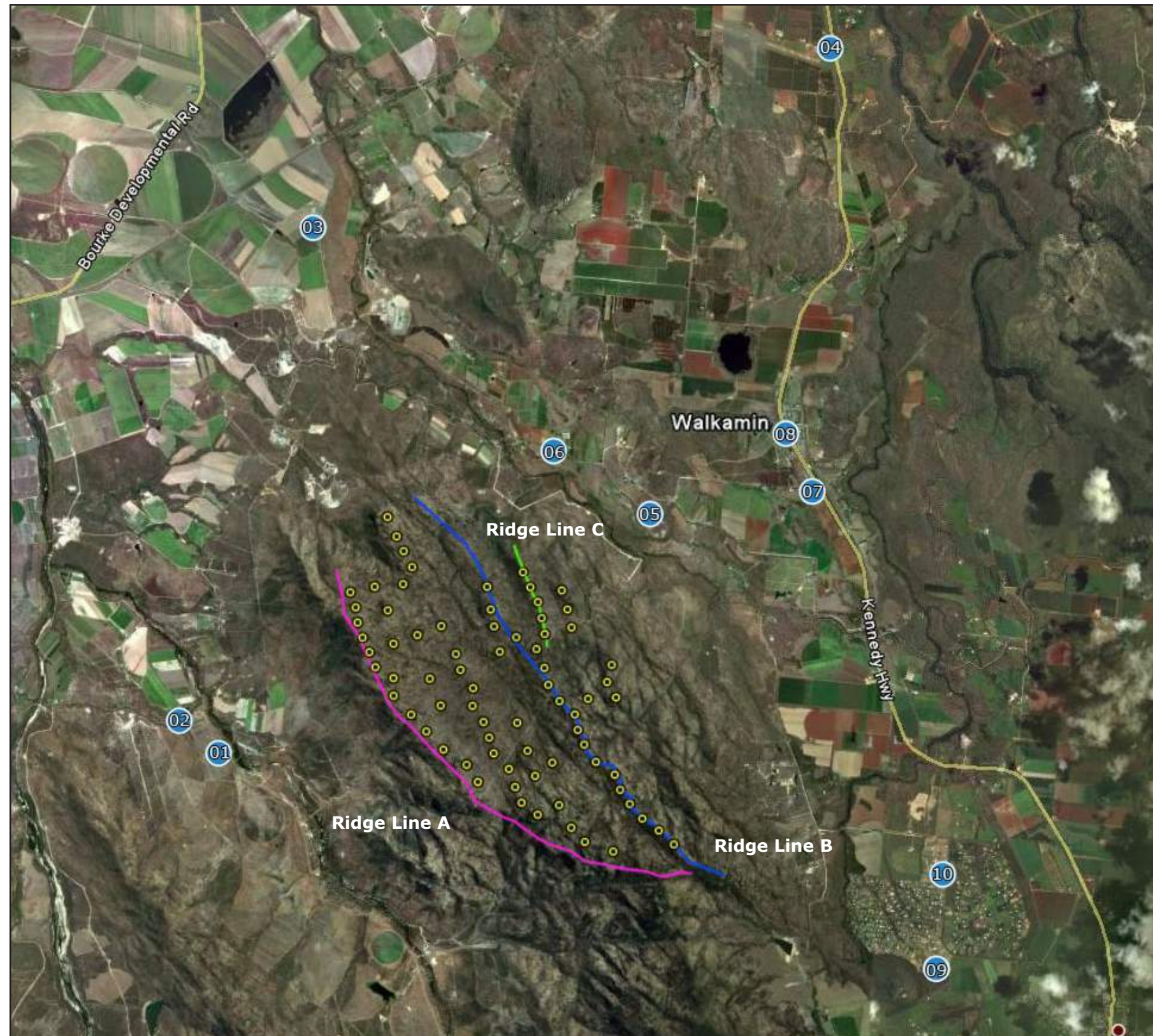


Reduced Size TrueView™ Photosimulations
August 2012

TRUESCAPE
CONSULTING & VISUAL FACILITATION

www.truescape.com

Viewpoint Locations

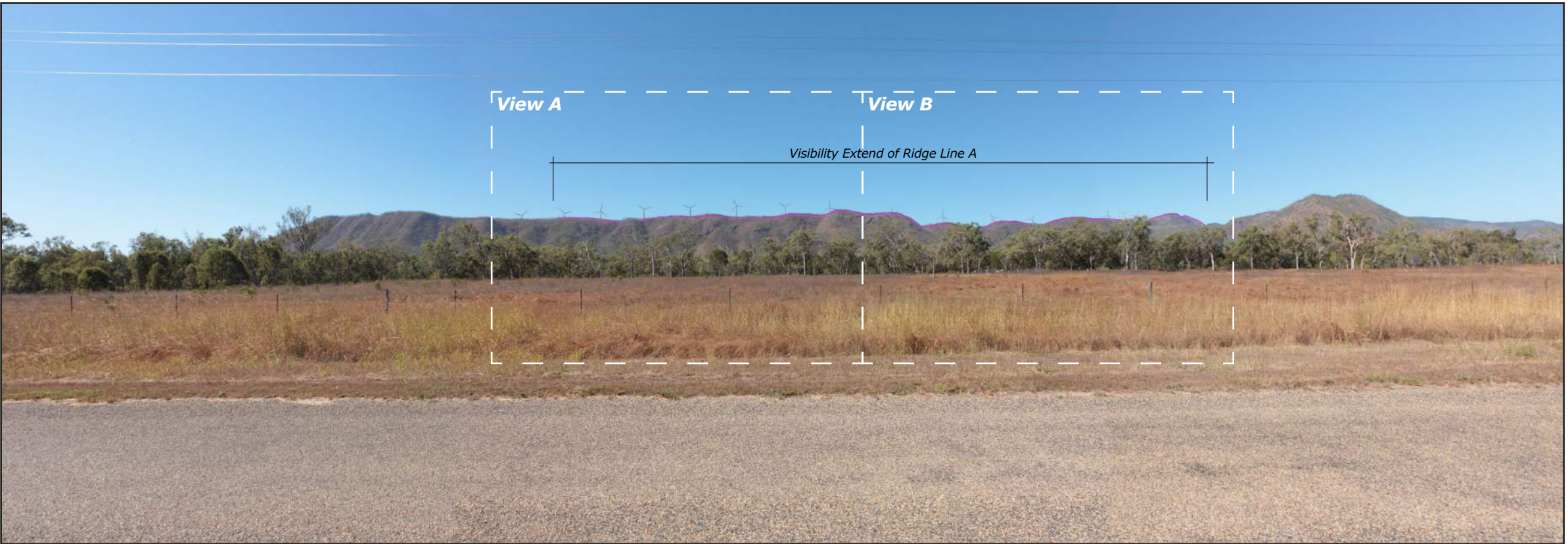


- Viewpoint 01:** Oaky Creek Road
- Viewpoint 02:** Springmount Road, Middle Creek
- Viewpoint 03:** Chettle Road
- Viewpoint 04:** Mareeba Airport
- Viewpoint 05:** Channel Road
- Viewpoint 06:** Channel Road, 800m from Hansen
- Viewpoint 07:** Morganbury & Kennedy Highway
- Viewpoint 08:** Walkamin, Kennedy Highway
- Viewpoint 09:** Rankine Street, Rangeview
- Viewpoint 10:** Moffat Street, Rangeview


- Viewpoint Location
- Turbines
- Ridge Line A
- Ridge Line B
- Ridge Line C



Viewpoint 01: Oaky Creek Road - Existing View



Viewpoint 01: Oaky Creek Road - Proposed View




Transfield Services
Mt Emerald Wind Farm

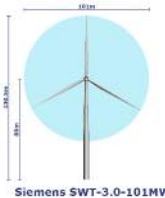
Viewpoint 01

Oaky Creek Road

Viewpoint Location
Turbines
Ridge Line A
Ridge Line B
Ridge Line C



Easting Position (MGA, zone 55):	322883.9
Northing Position (MGA, zone 55):	8099708.5
Elevation of Viewpoint Position (m):	529.6
Height of Camera Above Ground (m):	1.65
Date of Photography:	11 July 2011 at 1:55 p.m.
Orientation of View:	NE
Horizontal Field of View:	124°
Vertical Field of View:	55°
Distance to nearest visible turbine (km):	3.1



Siemens SWT-3.0-101MW

NOTES:

Viewpoint locations have been precision surveyed by
RPS
Unit 10 No 9, Pioneer Close,
PO Box 355, Mossman, QLD, 4873

No part of this photosimulation shall be altered in any way.

Visual Assessments should be made from the full size TrueView™ only.

The TrueView™ photo simulations are compiled from a series of photographic images which were shot with a Canon EOS-1Ds Mark III Camera using a 28mm lens.

Photosimulation Created Using
TrueView™ Technology

PROVIDED BY

TRUESCAPE
VISUAL COMMUNICATION

www.truescape.com

View A



Viewpoint 01: Oaky Creek Road - Proposed View

Enlargement area of previous page - Enlarged to a representative view when printed on A3 page and view from approx. 50cm distance

View B

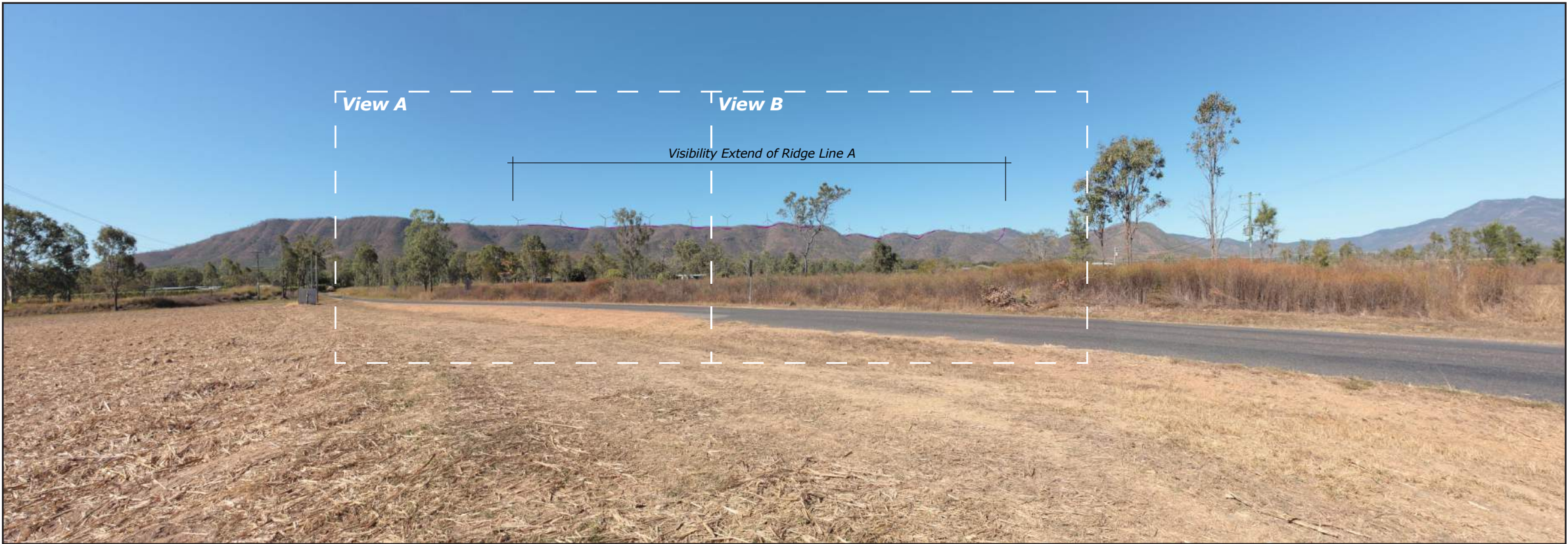


Viewpoint 01: Oaky Creek Road - Proposed View


Enlargement area of previous page - Enlarged to a representative view when printed on A3 page and view from approx. 50cm distance



Viewpoint 02: Springmount Road, Middle Creek - Existing View




Viewpoint 02: Springmount Road, Middle Creek - Proposed View




Transfield Services
Mt Emerald Wind Farm

Viewpoint 02


Springmount Road, Middle Creek




Viewpoint Location




Turbines




Ridge Line A



Ridge Line B



Ridge Line C



Easting Position (MGA, zone 55):

322178.1

Northing Position (MGA, zone 55):

8100266.3

Elevation of Viewpoint Position (m):

523.4

Height of Camera Above Ground (m):

1.65

Date of Photography:

11 July 2011 at 2:14 p.m.

Orientation of View:

E

Horizontal Field of View:

124°

Vertical Field of View:

55°

Distance to nearest visible turbine (km):

3.5



Siemens SWT-3.0-101MW

NOTES:

Viewpoint locations have been precision surveyed by
RPS
Unit 10 No 9, Pioneer Close,
PO Box 355, Mossman, QLD, 4873

No part of this photosimulation shall be altered in any way.

Visual Assessments should be made from the full size TrueView™ only.

The TrueView™ photo simulations are compiled from a series of photographic images which were shot with a Canon EOS-1Ds Mark III Camera using a 28mm lens.

Photosimulation Created Using TrueView™ Technology

PROVIDED BY



TRUESCAPE
VISUAL COMMUNICATION

www.truescape.com

View A



Viewpoint 02: Springmount Road, Middle Creek - Proposed View

Enlargement area of previous page - Enlarged to a representative view when printed on A3 page and view from approx. 50cm distance

View B

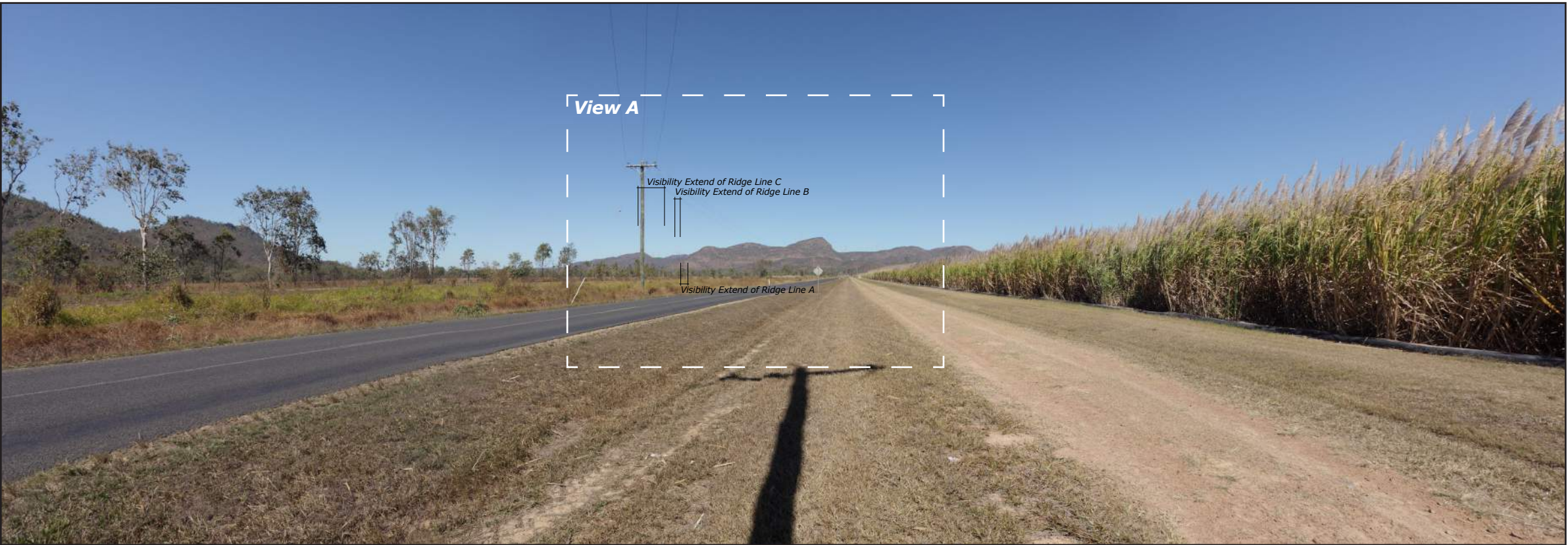


Viewpoint 02: Springmount Road, Middle Creek - Proposed View


Enlargement area of previous page - Enlarged to a representative view when printed on A3 page and view from approx. 50cm distance



Viewpoint 03: Chettle Road - Existing View





Viewpoint 03: Chettle Road - Proposed View





Transfield Services
Mt Emerald Wind Farm


Viewpoint 03
Chettle Road


 Viewpoint Location

 Turbines

 Ridge Line A

 Ridge Line B

 Ridge Line C



Easting Position (MGA, zone 55):

324472.5

Northing Position (MGA, zone 55):

8108712.7

Elevation of Viewpoint Position (m):

517.9

Height of Camera Above Ground (m):

1.65

Date of Photography:

11 July 2011 at 12:58 p.m.

Orientation of View:

S

Horizontal Field of View:

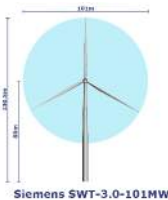
124°

Vertical Field of View:

55°

Distance to nearest visible turbine (km):

5.1



Siemens SWT-3.0-101MW

NOTES:

Viewpoint locations have been precision surveyed by
RPS
Unit 10 No 9, Pioneer Close,
PO Box 355, Mossman, QLD, 4873


No part of this photosimulation shall be altered in any way.

Visual Assessments should be made from the full size TrueView™ only.

The TrueView™ photo simulations are compiled from a series of photographic images which were shot with a Canon EOS-1Ds Mark III Camera using a 28mm lens.

Photosimulation Created Using
TrueView™ Technology

PROVIDED BY



TRUESCAPE
VISUAL COMMUNICATION

www.truescape.com

View A

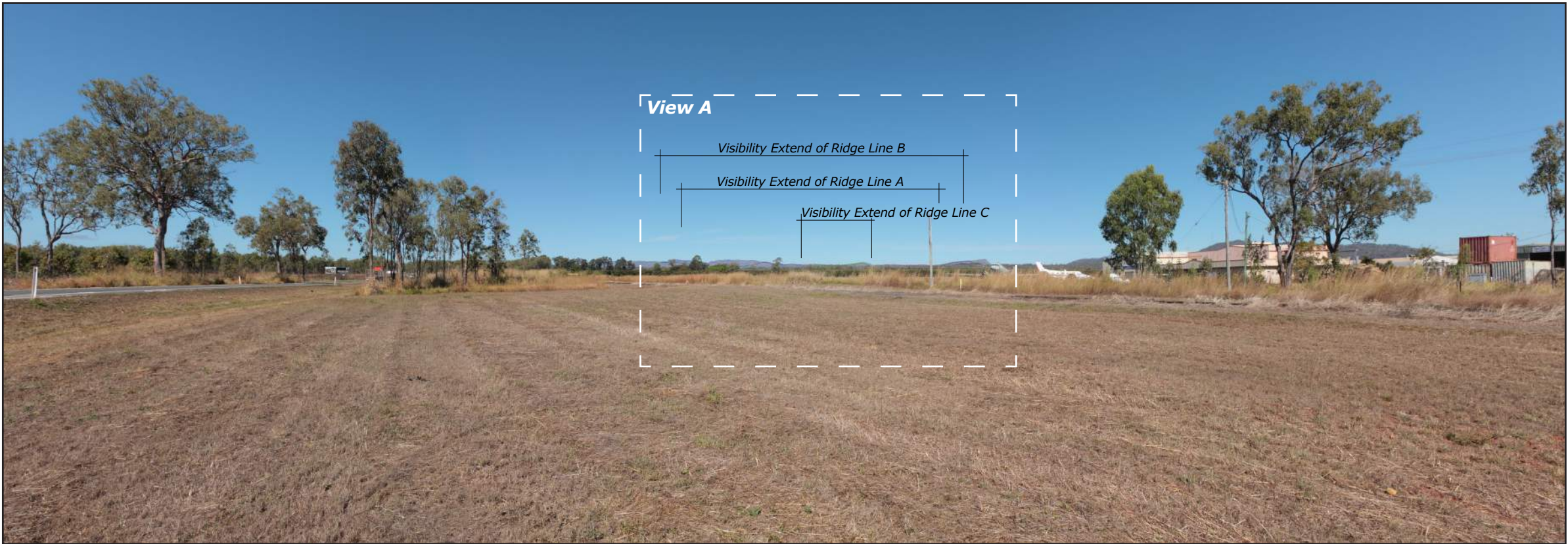


Viewpoint 03: Chettle Road - Proposed View


Enlargement area of previous page - Enlarged to a representative view when printed on A3 page and view from approx. 50cm distance



Viewpoint 04: Mareeba Airport - Existing View



Viewpoint 04: Mareeba Airport - Proposed View




Transfield Services
Mt Emerald Wind Farm

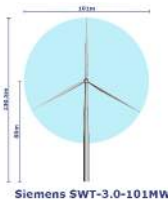
Viewpoint 04

Mareeba Airport

Viewpoint Location
Turbines
Ridge Line A
Ridge Line B
Ridge Line C



Easting Position (MGA, zone 55): 333381.1
Northing Position (MGA, zone 55): 8111977.6
Elevation of Viewpoint Position (m): 473.7
Height of Camera Above Ground (m): 1.65
Date of Photography: 11 July 2011 at 10:55 a.m.
Orientation of View: S
Horizontal Field of View: 124°
Vertical Field of View: 55°
Distance to nearest visible turbine (km): 1.0



Siemens SWT-3.0-101MW

NOTES:

Viewpoint locations have been precision surveyed by
RPS
Unit 10 No 9, Pioneer Close,
PO Box 355, Mossman, QLD, 4873

No part of this photosimulation shall be altered in any way.

Visual Assessments should be made from the full size TrueView™ only.

The TrueView™ photo simulations are compiled from a series of photographic images which were shot with a Canon EOS-1Ds Mark III Camera using a 28mm lens.

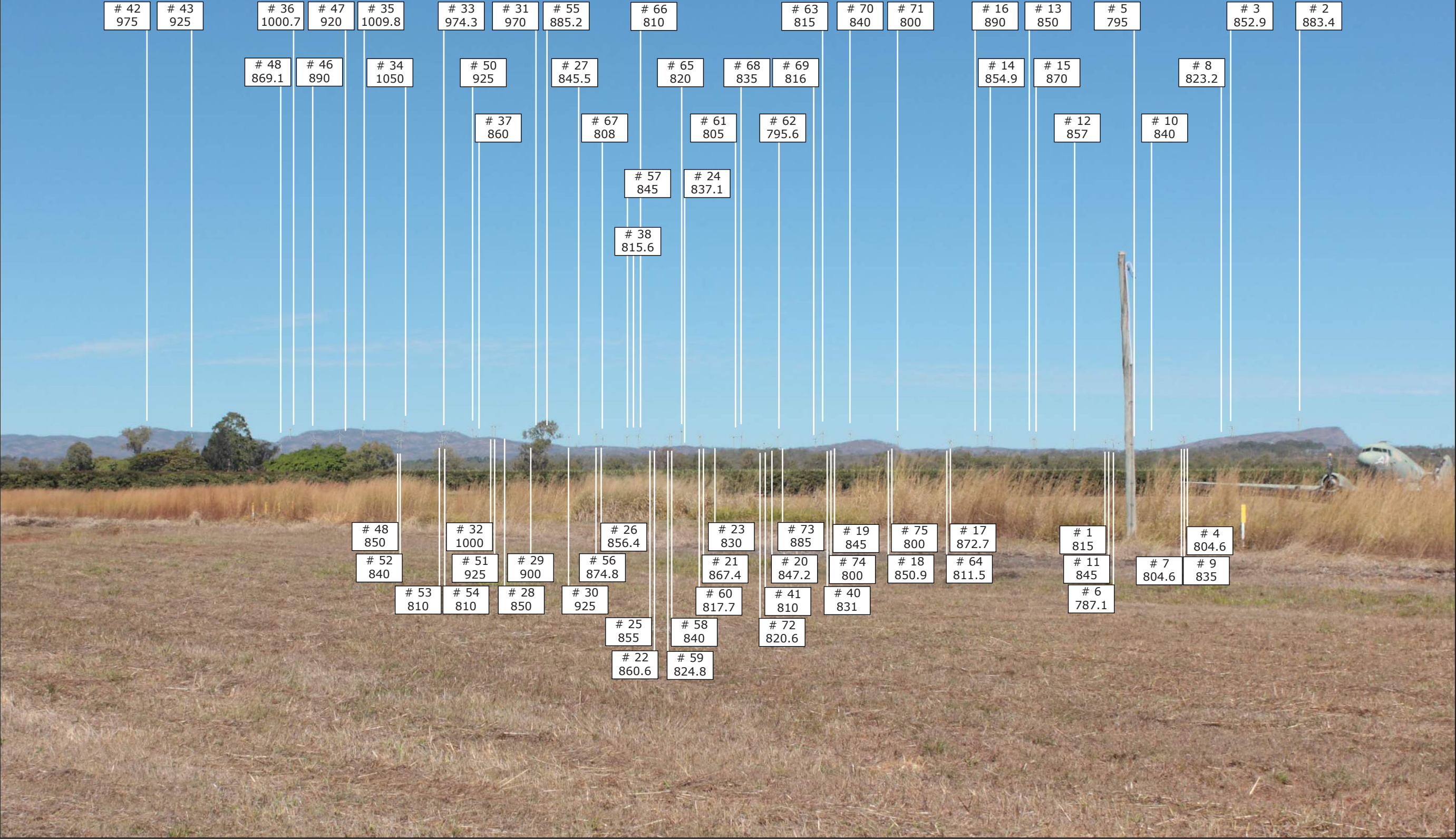
Photosimulation Created Using TrueView™ Technology

PROVIDED BY

TRUESCAPE
VISUAL COMMUNICATION

www.truescape.com

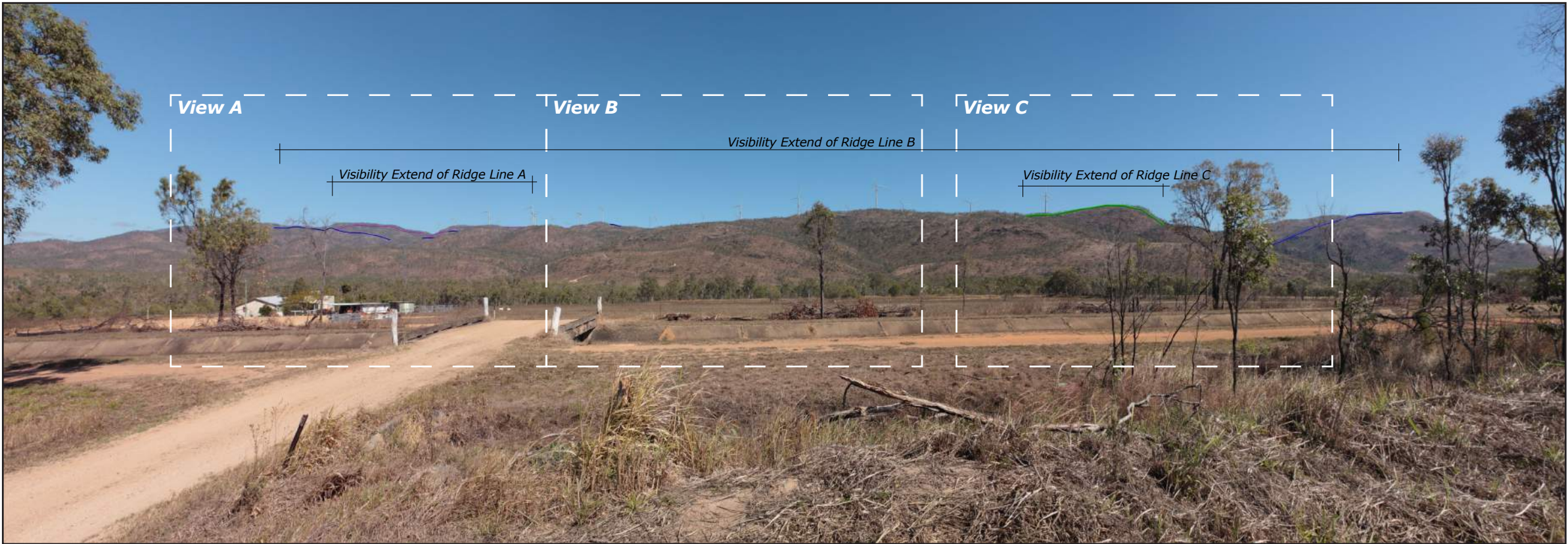
View A




Viewpoint 04: Mareeba Airport - Proposed View
Enlargement area of previous page - Enlarged to a representative view when printed on A3 page and view from approx. 50cm distance



Viewpoint 05: Channel Road - Existing View




Viewpoint 05: Channel Road - Proposed View



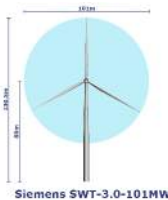
Transfield Services
Mt Emerald Wind Farm

Viewpoint 05
Channel Road

Viewpoint Location
Turbines
Ridge Line A
Ridge Line B
Ridge Line C



Easting Position (MGA, zone 55):	330263.6
Northing Position (MGA, zone 55):	8103833.1
Elevation of Viewpoint Position (m):	584.2
Height of Camera Above Ground (m):	1.65
Date of Photography:	12 July 2011 at 1:18 p.m.
Orientation of View:	SW
Horizontal Field of View:	124°
Vertical Field of View:	55°
Distance to nearest visible turbine (km):	2.0



Siemens SWT-3.0-101MW

NOTES:

Viewpoint locations have been precision surveyed by
RPS
Unit 10 No 9, Pioneer Close,
PO Box 355, Mossman, QLD, 4873


No part of this photosimulation shall be altered in any way.

Visual Assessments should be made from the full size TrueView™ only.

The TrueView™ photo simulations are compiled from a series of photographic images which were shot with a Canon EOS-1Ds Mark III Camera using a 28mm lens.

Photosimulation Created Using
TrueView™ Technology

PROVIDED BY



TRUESCAPE
VISUAL COMMUNICATION

www.truescape.com

View A



Viewpoint 05: Channel Road - Proposed View

Enlargement area of previous page - Enlarged to a representative view when printed on A3 page and view from approx. 50cm distance

View B



Viewpoint 05: Channel Road - Proposed View

Enlargement area of previous page - Enlarged to a representative view when printed on A3 page and view from approx. 50cm distance

View C

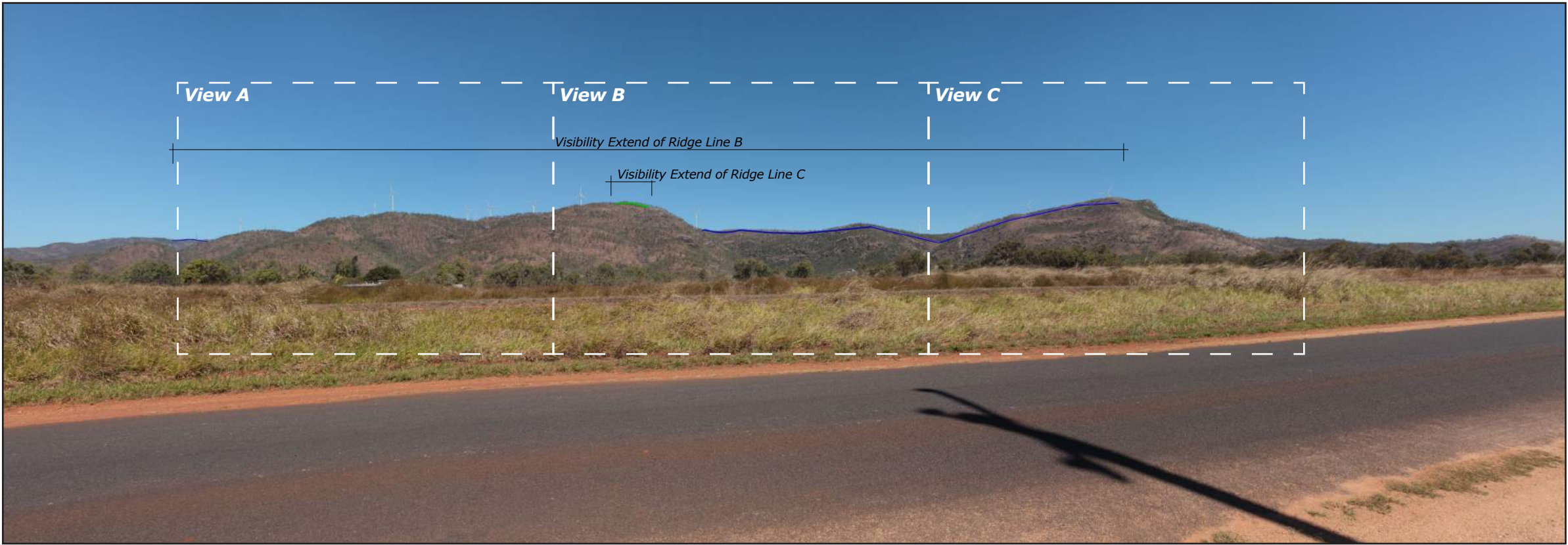


Viewpoint 05: Channel Road - Proposed View


Enlargement area of previous page - Enlarged to a representative view when printed on A3 page and view from approx. 50cm distance



Viewpoint 06: Channel Road, 800m from Hansen - Existing View




Viewpoint 06: Channel Road, 800m from Hansen - Proposed View





Transfield Services
Mt Emerald Wind Farm


Viewpoint 06


Channel Road, 800m from Hansen


Viewpoint Location

Turbines

Ridge Line A

Ridge Line B

Ridge Line C



Easting Position (MGA, zone 55):

328643.6

Northing Position (MGA, zone 55):

8104975.0

Elevation of Viewpoint Position (m):

555.0

Height of Camera Above Ground (m):

1.65

Date of Photography:

11 July 2011 at 12:27 p.m.

Orientation of View:

SW

Horizontal Field of View:

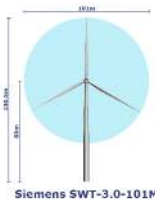
124°

Vertical Field of View:

55°

Distance to nearest visible turbine (km):

2.2



Siemens SWT-3.0-101MW

NOTES:

Viewpoint locations have been precision surveyed by
RPS
Unit 10 No 9, Pioneer Close,
PO Box 355, Mossman, QLD, 4873


No part of this photosimulation shall be altered in any way.

Visual Assessments should be made from the full size TrueView™ only.

The TrueView™ photo simulations are compiled from a series of photographic images which were shot with a Canon EOS-1Ds Mark III Camera using a 28mm lens.

Photosimulation Created Using
TrueView™ Technology

PROVIDED BY



TRUESCAPE
VISUAL COMMUNICATION

www.truescape.com

View A



Viewpoint 06: Channel Road, 800m from Hansen - Proposed View

Enlargement area of previous page - Enlarged to a representative view when printed on A3 page and view from approx. 50cm distance

View B



Viewpoint 06: Channel Road, 800m from Hansen - Proposed View

Enlargement area of previous page - Enlarged to a representative view when printed on A3 page and view from approx. 50cm distance

View C

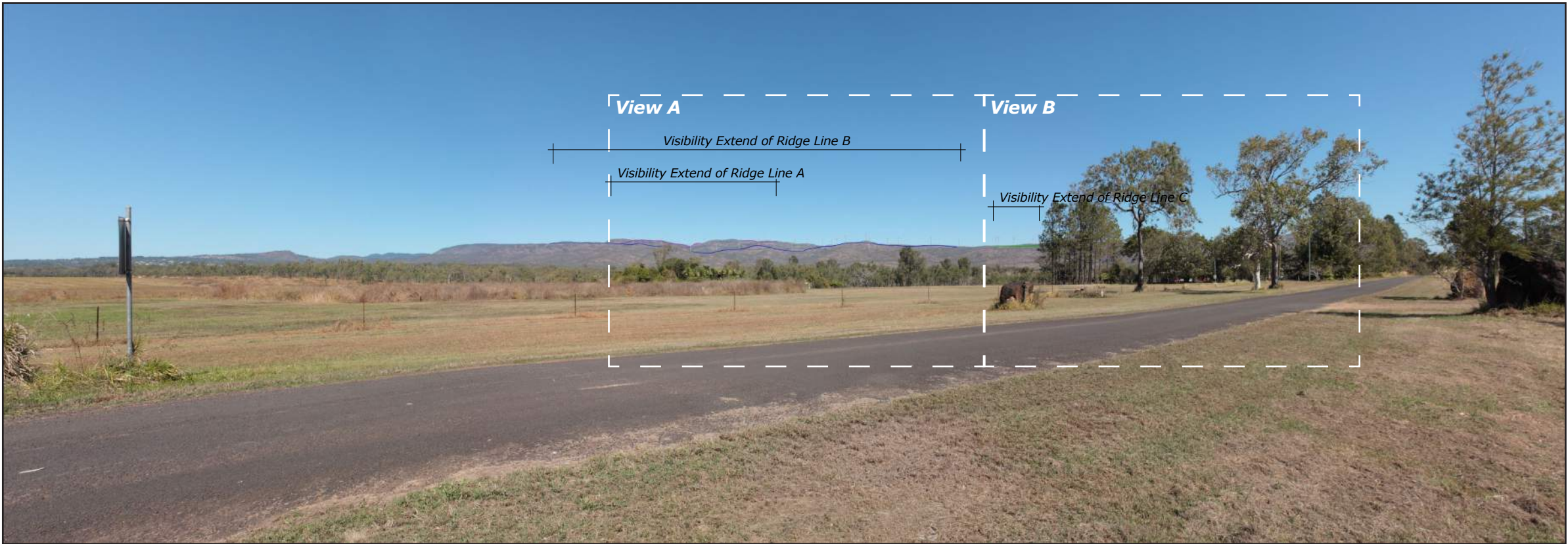


Viewpoint 06: Channel Road, 800m from Hansen - Proposed View


Enlargement area of previous page - Enlarged to a representative view when printed on A3 page and view from approx. 50cm distance



Viewpoint 07: Morganbury & Kennedy Highway - Existing View



Viewpoint 07: Morganbury & Kennedy Highway - Proposed View





Transfield Services
Mt Emerald Wind Farm


Viewpoint 07


Morganbury & Kennedy Highway


 Viewpoint Location

 Turbines

 Ridge Line A

 Ridge Line B

 Ridge Line C



Easting Position (MGA, zone 55):

333132.8

Northing Position (MGA, zone 55):

8104320.6

Elevation of Viewpoint Position (m):

597.2

Height of Camera Above Ground (m):

1.65

Date of Photography:

11 July 2011 at 11:44 a.m.

Orientation of View:

SW

Horizontal Field of View:

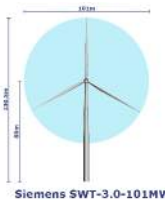
124°

Vertical Field of View:

55°

Distance to nearest visible turbine (km):

4.6



Siemens SWT-3.0-101MW

NOTES:

Viewpoint locations have been precision surveyed by **RPS Unit 10 No 9, Pioneer Close, PO Box 355, Mossman, QLD, 4873**


No part of this photosimulation shall be altered in any way.

Visual Assessments should be made from the full size TrueView™ only.

The TrueView™ photo simulations are compiled from a series of photographic images which were shot with a Canon EOS-1Ds Mark III Camera using a 28mm lens.

Photosimulation Created Using TrueView™ Technology

PROVIDED BY



TRUESCAPE
VISUAL COMMUNICATION

www.truescape.com

View A



Viewpoint 07: Morganbury & Kennedy Highway - Proposed View

Enlargement area of previous page - Enlarged to a representative view when printed on A3 page and view from approx. 50cm distance

View B

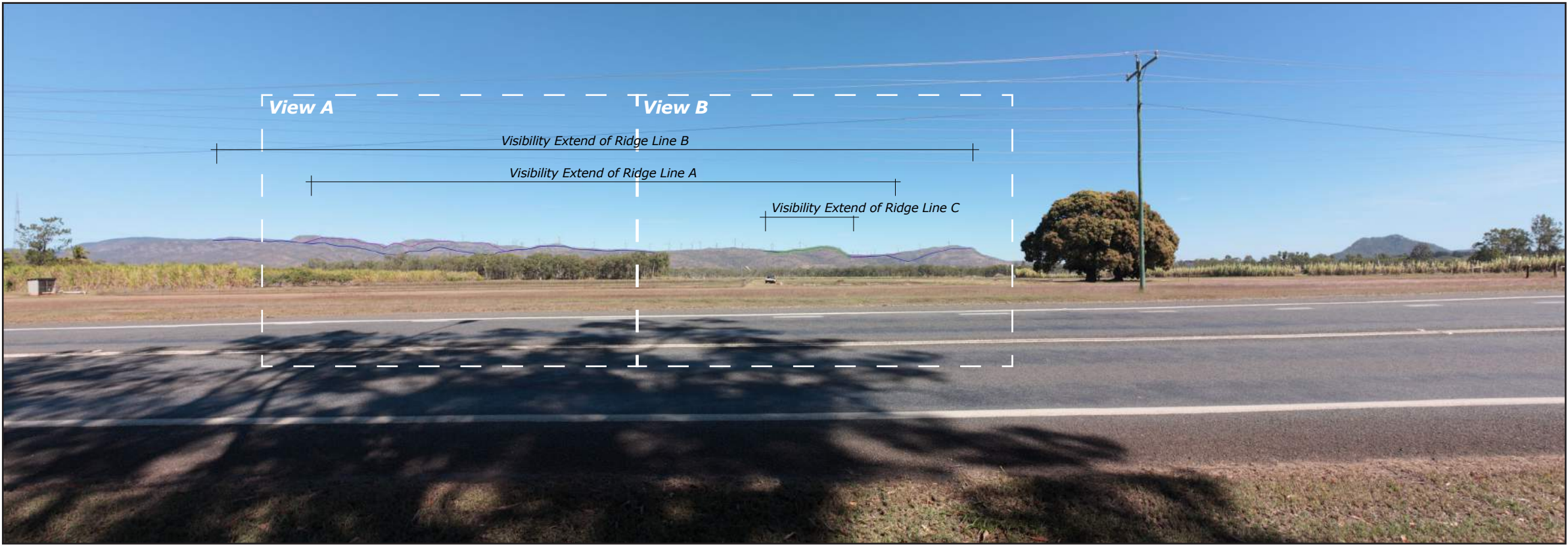


Viewpoint 07: Morganbury & Kennedy Highway - Proposed View


Enlargement area of previous page - Enlarged to a representative view when printed on A3 page and view from approx. 50cm distance



Viewpoint 08: Walkamin, Kennedy Highway - Existing View




Viewpoint 08: Walkamin, Kennedy Highway - Proposed View





Transfield Services
Mt Emerald Wind Farm


Viewpoint 08


Walkamin, Kennedy Highway


 Viewpoint Location

 Turbines

 Ridge Line A

 Ridge Line B

 Ridge Line C



Easting Position (MGA, zone 55):

332632.9

Northing Position (MGA, zone 55):

8105273.6

Elevation of Viewpoint Position (m):

591.8

Height of Camera Above Ground (m):

1.65

Date of Photography:

11 July 2011 at 11:30 a.m.

Orientation of View:

SW

Horizontal Field of View:

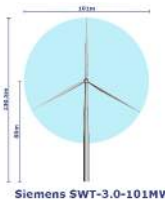
124°

Vertical Field of View:

55°

Distance to nearest visible turbine (km):

4.7



Siemens SWT-3.0-101MW

NOTES:

Viewpoint locations have been precision surveyed by
RPS
Unit 10 No 9, Pioneer Close,
PO Box 355, Mossman, QLD, 4873


No part of this photosimulation shall be altered in any way.

Visual Assessments should be made from the full size TrueView™ only.

The TrueView™ photo simulations are compiled from a series of photographic images which were shot with a Canon EOS-1Ds Mark III Camera using a 28mm lens.

Photosimulation Created Using
TrueView™ Technology

PROVIDED BY



TRUESCAPE
VISUAL COMMUNICATION

www.truescape.com

View A



Viewpoint 08: Walkamin, Kennedy Highway - Proposed View

Enlargement area of previous page - Enlarged to a representative view when printed on A3 page and view from approx. 50cm distance

View B

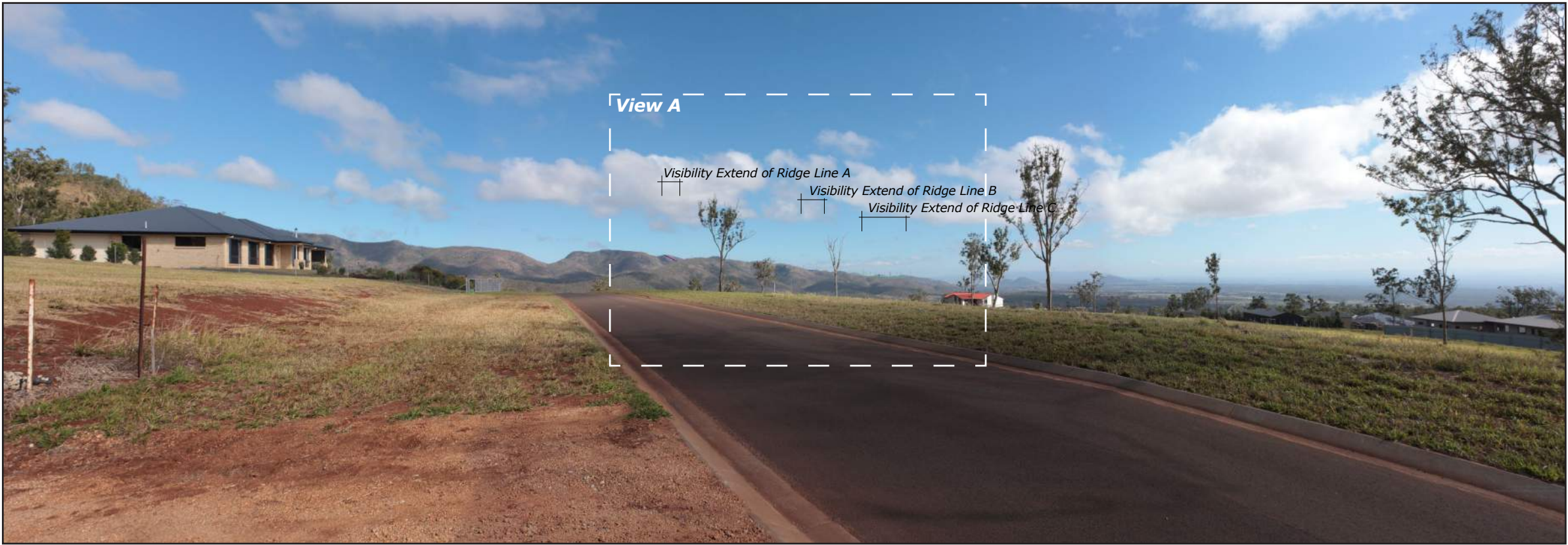


Viewpoint 08: Walkamin, Kennedy Highway - Proposed View


Enlargement area of previous page - Enlarged to a representative view when printed on A3 page and view from approx. 50cm distance



Viewpoint 09: Rankine Street, Rangeview - Existing View




Viewpoint 09: Rankine Street, Rangeview - Proposed View





Transfield Services
Mt Emerald Wind Farm


Viewpoint 09


Rankine Street, Rangeview


 Viewpoint Location

 Turbines

 Ridge Line A

 Ridge Line B

 Ridge Line C



Easting Position (MGA, zone 55):

335271.2

Northing Position (MGA, zone 55):

8096178.9

Elevation of Viewpoint Position (m):

871.2

Height of Camera Above Ground (m):

1.65

Date of Photography:

12 July 2011 at 9:54 a.m.

Orientation of View:

SW

Horizontal Field of View:

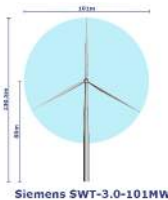
124°

Vertical Field of View:

55°

Distance to nearest visible turbine (km):

5.0



Siemens SWT-3.0-101MW

NOTES:

Viewpoint locations have been precision surveyed by
RPS
Unit 10 No 9, Pioneer Close,
PO Box 355, Mossman, QLD, 4873


No part of this photosimulation shall be altered in any way.

Visual Assessments should be made from the full size TrueView™ only.

The TrueView™ photo simulations are compiled from a series of photographic images which were shot with a Canon EOS-1Ds Mark III Camera using a 28mm lens.

Photosimulation Created Using
TrueView™ Technology

PROVIDED BY



TRUESCAPE
VISUAL COMMUNICATION

www.truescape.com

View A

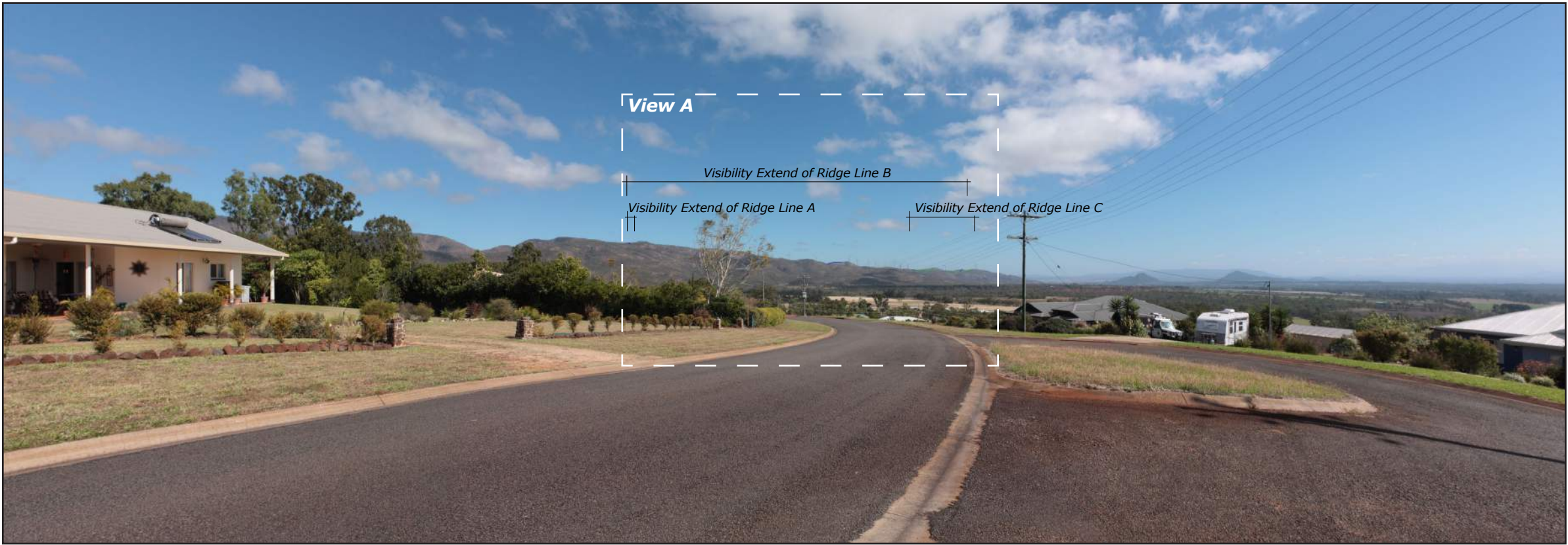


Viewpoint 09: Rankine Street, Rangeview - Proposed View


Enlargement area of previous page - Enlarged to a representative view when printed on A3 page and view from approx. 50cm distance



Viewpoint 10: Moffat Street, Rangeview - Existing View




Viewpoint 10: Moffat Street, Rangeview - Proposed View





Transfield Services
Mt Emerald Wind Farm


Viewpoint 10


Moffat Street, Rangeview


 Viewpoint Location

 Turbines

 Ridge Line A

 Ridge Line B

 Ridge Line C



Easting Position (MGA, zone 55):

335355.5

Northing Position (MGA, zone 55):

8097799.6

Elevation of Viewpoint Position (m):

767.5

Height of Camera Above Ground (m):

1.65

Date of Photography:

12 July 2011 at 10:37 a.m.

Orientation of View:

W

Horizontal Field of View:

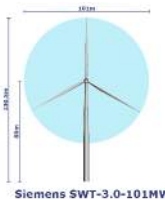
124°

Vertical Field of View:

55°

Distance to nearest visible turbine (km):

4.6



Siemens SWT-3.0-101MW

NOTES:

Viewpoint locations have been precision surveyed by **RPS Unit 10 No 9, Pioneer Close, PO Box 355, Mossman, QLD, 4873**


No part of this photosimulation shall be altered in any way.

Visual Assessments should be made from the full size TrueView™ only.

The TrueView™ photo simulations are compiled from a series of photographic images which were shot with a Canon EOS-1Ds Mark III Camera using a 28mm lens.

Photosimulation Created Using TrueView™ Technology

PROVIDED BY



TRUESCAPE
VISUAL COMMUNICATION

www.truescape.com

View A



Viewpoint 10: Moffat Street, Rangeview - Proposed View

Enlargement area of previous page - Enlarged to a representative view when printed on A3 page and view from approx. 50cm distance